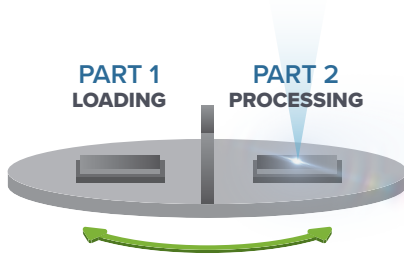


# PLASTIC DEGATING SYSTEM

ROTARY TABLE WORKSTATION



OTHER MODELS AVAILABLE

## MULTI-POSITION ROTARY TABLE FOR INCREASED PRODUCTION

This turnkey laser system is configured for laser cutting of injection molded parts. Our machine vision technology allows us to accurately detect gates and excess flashing created in the molding process. By using an ultraviolet laser, plastic is able to be cut without any charring to the surrounding plastic.

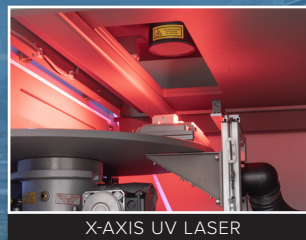
CMS Laser will design a system to process your specific parts that will meet or exceed your expectations. Our experienced engineering team is able to customize software and incorporate any automation.

### ADVANTAGES:

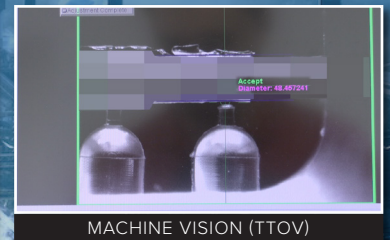
- Replaces hand cut labor with high-precision technology
- Process One Side while Loading Other
- Upgradeable to 3 or 4-Position Table

### WORKSTATION FEATURES:

- Class 1 Rotary Table 2-Position Workstation
- Ultraviolet Laser Source
- X-Axis Laser with Through the Optics Vision (TTOV)
- Vision Lighting for TTOV
- Safety Light Curtain and Interlocks
- Safety Touch Sensor Process Activation
- Overall system size is adaptable to accommodate large part sizes, automation, and customizations.



X-AXIS UV LASER



MACHINE VISION (TTOV)

